

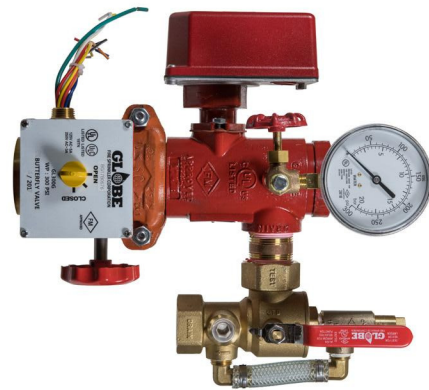
MODEL UM UNIVERSAL MANIFOLD ASSEMBLY

(With or Without Control Valve)

1¼", 1½", 2", 2½", 76.1mm, 3", 4", 6", 165.1mm, 8"

GENERAL DESCRIPTION

The Globe Series "UM" Universal Manifold is a Listed/Approved manifold assembly incorporating a flow switch, test & drain valve, system pressure gauge, and pressure relief valve. The UM may be ordered with or without an attached butterfly control valve with Internal Supervisory Switch. The UM is rated for a maximum working pressure of 300 psi (20.6 bar). It has been engineered to incorporate the above mentioned components in a compact envelope. The Test and Drain Valve contains a test orifice of K2.8 so that it may be utilized for flow testing any system with sprinklers having K-Factors of 2.8 or larger. The UM is available in a variety of sizes and end connections to allow for cost effectiveness and ease of connections to check valves, control valves, and piping. For sizes 3" and smaller, an 18" long stainless steel braided flexible hose is included with the UM for connecting the Test and Drain valve to a drain stack. The UM may be installed in the vertical (with flow upward) or horizontal orientation



**MODEL UM
UNIVERSAL MANIFOLD ASSEMBLY**

FLOOR CONTROL ASSEMBLY

The UM may be utilized to meet the NFPA 13 requirements for Floor Control Valve Assemblies where there are multi-story buildings exceeding two stories in height requiring zoning by floor or whenever separate control and floor zoning is specified. The UM has been engineered with space savings in mind for those commonly installed applications in stairwell landings and small alcoves. All UM assemblies include the NFPA 13 required Listed Pressure Relief Valve which is pre-piped to drain. The relief valve is preset for 175 psi and is adjustable to 310 psi for high pressure system conditions. In addition to the relief valve, the UM is equipped with a Test and Drain Valve. The Test and Drain Valve contains a test orifice of K2.8 so that it may be utilized for flow testing any system with sprinklers having K-Factors of 2.8 or larger.

Note: NFPA 13 requires that a test connection providing a flow rate equal to or less than one sprinkler of a type having the smallest orifice on the system is to be provided.

TECHNICAL DATA

Approvals

- cULus
- FM

Maximum System Working Pressure

- 300 psi (20.6 bar)

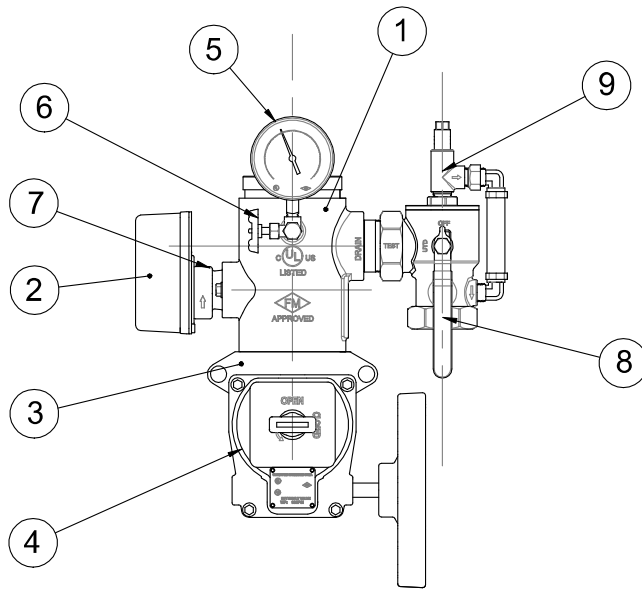
End Connections

- See Table A

Materials of Construction

- See Figure 1

***Multiple Patents Pending**



ITEM NO.	DESCRIPTION	MATERIAL
1	UMC VALVE BODY	DUCTILE IRON
2	FLOW SWITCH	SEE FLOW SWITCH TECHNICAL LITERATURE
3	RIGID COUPLING	SEE COUPLING TECHNICAL LITERATURE
4	BUTTERFLY CONTROL VALVE WITH INTERNAL SUPERVISORY SWITCH	SEE GLOBE BUTTERFLY CONTROL VALVE TECHNICAL LITERATURE
5	PRESSURE GAUGE	PLASTIC
6	THREE-WAY (SOG) VALVE	BRONZE
7	FLOW SWITCH ADAPTER	DUCTILE IRON
8	MODEL UTD TEST AND DRAIN	SEE GLOBE TECHNICAL DATA SHEET GFV-570
9	MODEL ARV ADJUSTABLE RELIEF VALVE	SEE GLOBE TECHNICAL DATA SHEET GFV-575

NOTE:

- 4" (DN100) shown as reference (smaller size configurations vary)
- See ordering procedure for replacement part kits and Table A for part numbers for all sizes and configurations

FIGURE 1: MODEL UM ASSEMBLY MATERIALS OF CONSTRUCTION

TABLE A. MODEL UM ASSEMBLY CONFIGURATIONS

SIZE	CONTROL VALVE	UM BODY END CONNECTIONS	MODEL UTD TEST AND DRAIN SIZE	PART NUMBER	APPROXIMATE SHIPPING WEIGHTS LBS. (kg)
1 1/4"	GL300G	G x G	1"	317701-A-B-H	19.4 (8.8)
1 1/4"	NONE	G x G	1"	317701-A-H	14.8 (6.7)
1 1/4"	GL300T	M x F THREADED	1"	317702-A-B-H	18.6 (8.4)
1 1/4"	NONE	M x F THREADED	1"	317702-A-H	14.8 (6.7)
1 1/2"	GL300T	M x F THREADED	1"	317710-A-B-H	19 (8.6)
1 1/2"	NONE	M x F THREADED	1"	317710-A-H	14.8 (6.7)
1 1/2"	GL300G	G x G	1"	317709-A-B-H	19.9 (9.0)
1 1/2"	NONE	G x G	1"	317709-A-H	14.8 (6.7)
2"	GL300T	M x F THREADED	1"	317718-A-B-H	20.5 (9.3)
2"	NONE	M x F THREADED	1"	317718-A-H	15.4 (7.0)
2"	GL300G	G x G	1"	317716-A-B-H	21.5 (9.8)
2"	NONE	G x G	1"	317716-A-H	14.6 (6.6)
2 1/2"	GL300G	G x G	1 1/4"	317720-A-B-H	25.5 (11.6)
2 1/2"	NONE	G x G	1 1/4"	317720-A-H	18.4 (8.3)
76.1 mm	GLR300G	G x G	1 1/4"	317720-D-A-B-H	25.5 (11.6)
76.1 mm	NONE	G x G	1 1/4"	317720-D-A-H	19.4 (8.8)
3"	GLR300G	G x G	1 1/4"	317725-A-B-H	43.5 (19.7)
3"	NONE	G x G	1 1/4"	317725-A-H	19.9 (9.0)
4"	GLR300G	G x G	2"	317730-A-B	61.0 (27.7)
4"	NONE	G x G	2"	317730-A	32.4 (14.7)
6"	GLR300G	G x G	2"	317735-A-B	89.0 (40.4)
6"	NONE	G x G	2"	317735-A	44.5 (20.2)
165.1 mm	GLR300G	G x G	2"	317735-D-A-B	89.0 (40.4)
165.1 mm	NONE	G x G	2"	317735-D-A	44.5 (20.2)
8"	GLR300G	G x G	2"	317740-A-B	119.0 (54.0)
8"	NONE	G x G	2"	317740-A	65.0 (29.5)