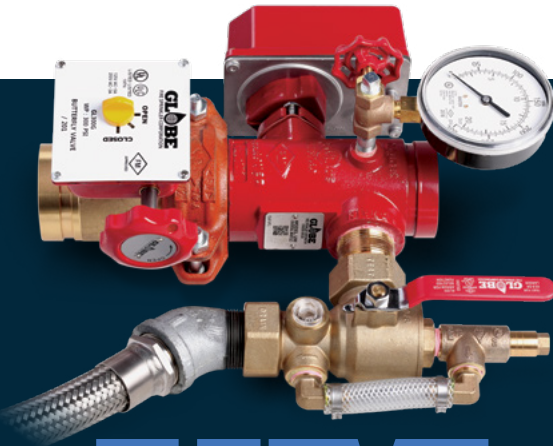




MULTIPLE PATENTS PENDING



UM

UNIVERSAL MANIFOLD



UMC

UNIVERSAL MANIFOLD CHECK

COMPLETE FLOOR CONTROL ASSEMBLIES:

INTEGRATED CHECK VALVE* | CONTROL VALVE
TEST & DRAIN | ADJUSTABLE RELIEF VALVE
SYSTEM GAUGE | QUICK-DRAIN FLEXIBLE HOSE

The revolutionary design of the Globe UM Universal Manifold and the UMC Universal Manifold Check integrates all the necessary components for a floor control station into a single assembly. This saves you time at every step of the design, fabrication, purchasing and installation process: one submittal, one takeout, one part number, one PO and one box.

The UM/UMC is UL Listed and FM Approved in multiple configurations and is rated for pressures up to 300 psi. The multiple configurations, pressure rating and small footprint allow the UM/UMC to overcome site-specific installation challenges in the field.

SAVE SPACE. SAVE TIME. SAVE MONEY.

- Straight out of the box, the unit integrates all necessary pre-mounted components: control valve, check valve,* flow switch, test and drain, adjustable pressure relief kit, gauge and quick-drain flexible hose.
- Compact design saves valuable space in tight-quarter installations such as halls, stairwell landings and alcoves.
- Available in both left- and right-handed orientations for horizontally-mounted applications.
- Available in a variety of sizes to meet nearly any application.

*UMC only

FLOOR CONTROL ASSEMBLY

The Globe UM/UMC can be used to meet NFPA 13 requirements for Floor Control Valve Assemblies in buildings exceeding two stories that are zoned by floor — or in any application that specifies separate control and floor zoning.

The UM/UMC is engineered with space savings in mind for those commonly installed applications in stairwell landings and small alcoves. All UM/UMC assemblies include the NFPA 13 required listed pressure relief valve, test and drain valve and pressure gauge.



UM Universal Manifold



UMC Universal Manifold Check

Dimensions and weight:

UM

Size	Take-Out Dimensions With Butterfly Valve	Shipping Weight*
1¼"	9.3"	21
1½"	9.6"	21
2"	11.5"	25
2½"	11.5"	28
3"	10.8"	49

UMC

Size	Take-Out Dimensions With Butterfly Valve	Shipping Weight*
1¼"	12.9"	26
1½"	13.1"	26
2"	14.5"	28
2½"	15.1"	34
3"	16.6"	61

*Approximate

TECHNICAL SPECIFICATIONS

Approvals:

- cULus Listed and FM Approved

Maximum system working pressure:

- 300 psi (20.6 bar)

JOIN THE REVOLUTION!

By combining all the necessary components of a floor control assembly into one unit, the Globe UM/UMC revolutionizes system installation. It saves installation time — and, as we all know, time is money.

To learn more about the Globe UM/UMC assembly, contact your local Globe territory manager, contact our customer service team at **(989) 846-4583** or visit globesprinkler.com/umc.



© 2018 Globe Fire Sprinkler Corporation.
All Rights Reserved. 4/18-0008-01

Technical Support
+1 989-414-2600
techservice@globesprinkler.com

Customer Service
+1 989-846-4583
domesticsales@globesprinkler.com
internationalsales@globesprinkler.com

globesprinkler.com